

Wallshell EIFPanel™

ARCHITECTURAL DETAIL - v2.0

www.wallshell.com



THE SOURCE OF MANGNIFICENCE™

Contents

Application.....	3
Principles for Designing.....	4
Construction Details.....	6
Remarks.....	20

Application

The Wallshell EIFPanel™ Panel System's Architectural Details provides a guidance on the most common details and design considerations to ensure that the construction details are suitable for the intended application of their project, consistent with industry practices in light of commercial and multifamily residential buildings.

This guide should be read along with the installation manual.



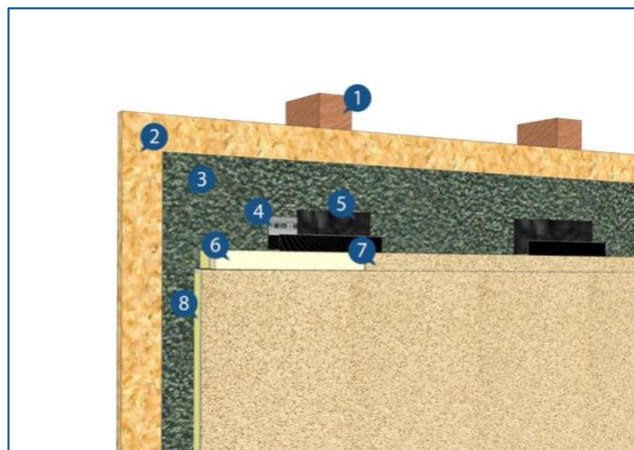
Principles for Designing

Supporting Studs and Shear Walls

Certification for the structural stability of any supporting studs should be in accordance with local building regulations and must be obtained by the building owner or official representatives, such as the project engineer. Supporting studs are used, the shear walls should be checked by the installer prior to installation to confirm that it is flat and true, and that correct fixings and details are employed. Any discrepancy should be referred to the design team.

UH Anchoring System

1. Wood Stud
2. Sheathing
3. Vapor Barrier
4. H-profile Clip and Fastener
5. Structural Sealant
6. Polyurethane Foam Sealant
7. Joint Mortar
8. EIFPanel Board



Wallshell UH concealed anchoring system consists of structural sealant, polyurethane foam sealant, joint mortar, clips and fasteners. It's an anchoring system on the structural extrusion designed specifically for EIFPanel™ to address the system wind load safety and thermal performance. Clips and fasteners as mechanical anchoring in the system while structural sealant as chemical anchoring to make tight adhesion between clips and panel. The combination of joint mortar, polyurethane foam sealant, clips, and fasteners becomes an anchor plate, which strengthens the mechanical anchoring for the system. The special joint mortar gives the panel system a good water tightness.

Anchors Requirements

Failure to use the fastener, washer or rail that are Wallshell products required may invalidate product warranty.

Weather/Water Resistant Barriers

A material used on the exterior of a building. It can resist bulk liquids that has leaked, penetrated or penetrated into the outer coating to the outer sheath or concrete wall (depending on the application) and further into the wall assembly.

Drainage System

There has a cavity between the back of the board and the vapor barrier, which works with drainage weep to create a complete drainage system to ensure that water does not stay in the panel.

Finishes

There are different colors can be chosen as panel finishes, and each series finish color corresponds to a different level of finish textures. For more specific information, you can refer to the Catalog.

Construction Details

This chapter provides an overview of the various common details to cover a wide range of situations that are expected on a regular basis.

These drawings do not contain the complete details required for the configuration and must be read along with the installation manual at www.wallshell.com. You should obtain architectural, engineering or other technical advice to assess whether these drawings are suitable for your particular project. Walpanel Inc. is not responsible for the use of these drawings.

Wood Structural Wall Cladding

Figure 1: Elevation and Floor Plan.....7

Figure 2: Vertical Joint Detail.....8

Figure 3: Horizontal Joint Detail9

Figure 4: Outer Corner Detail10

Figure 5: Inner Corner Detail.....11

Figure 6: Window Jamb Detail (Option 1).....12

Figure 7: Window Jamb Detail (Option 2).....13

Figure 8: Window Head Detail (Option 1).....14

Figure 9: Window Head Detail (Option 2).....15

Figure 10: Window Sill Detail (Option 1).....16

Figure 11: Window Sill Detail (Option 2).....17

Figure 12: Parapet Detail.....18

Figure 13: Base Detail19

Figure 1: Elevation and Floor Plan

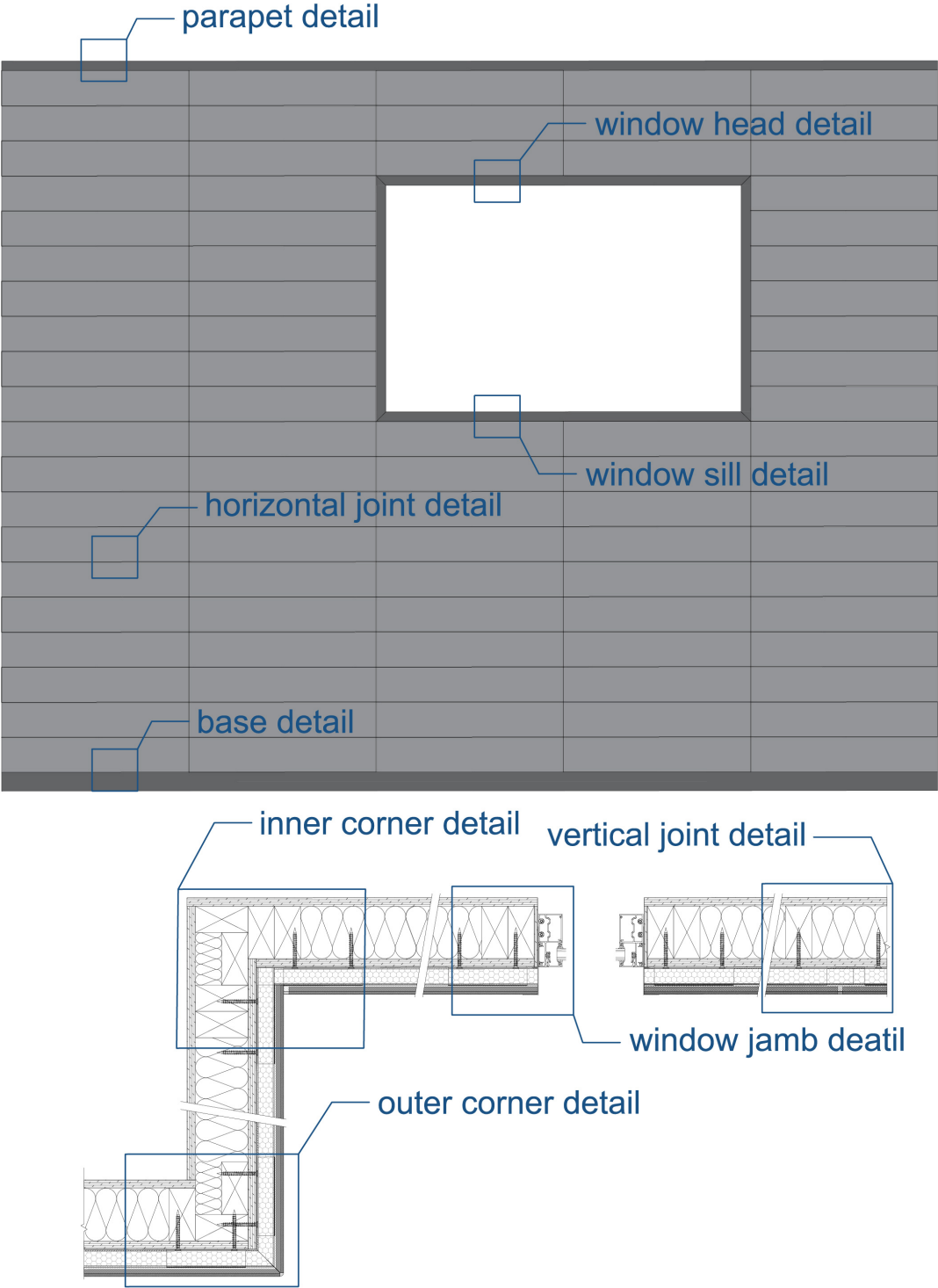


Figure 2: Vertical Joint Detail

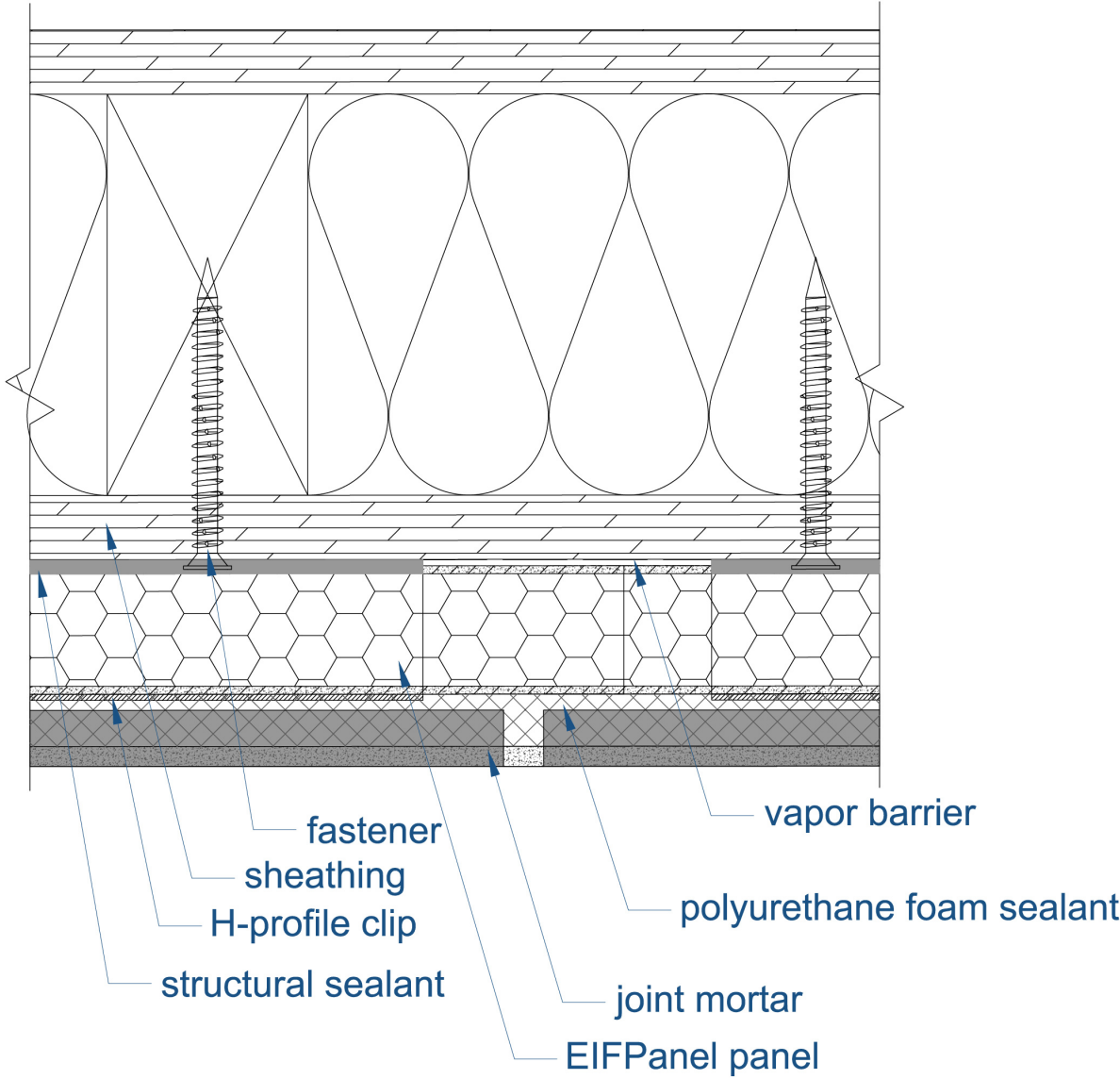


Figure 3: Horizontal Joint Detail

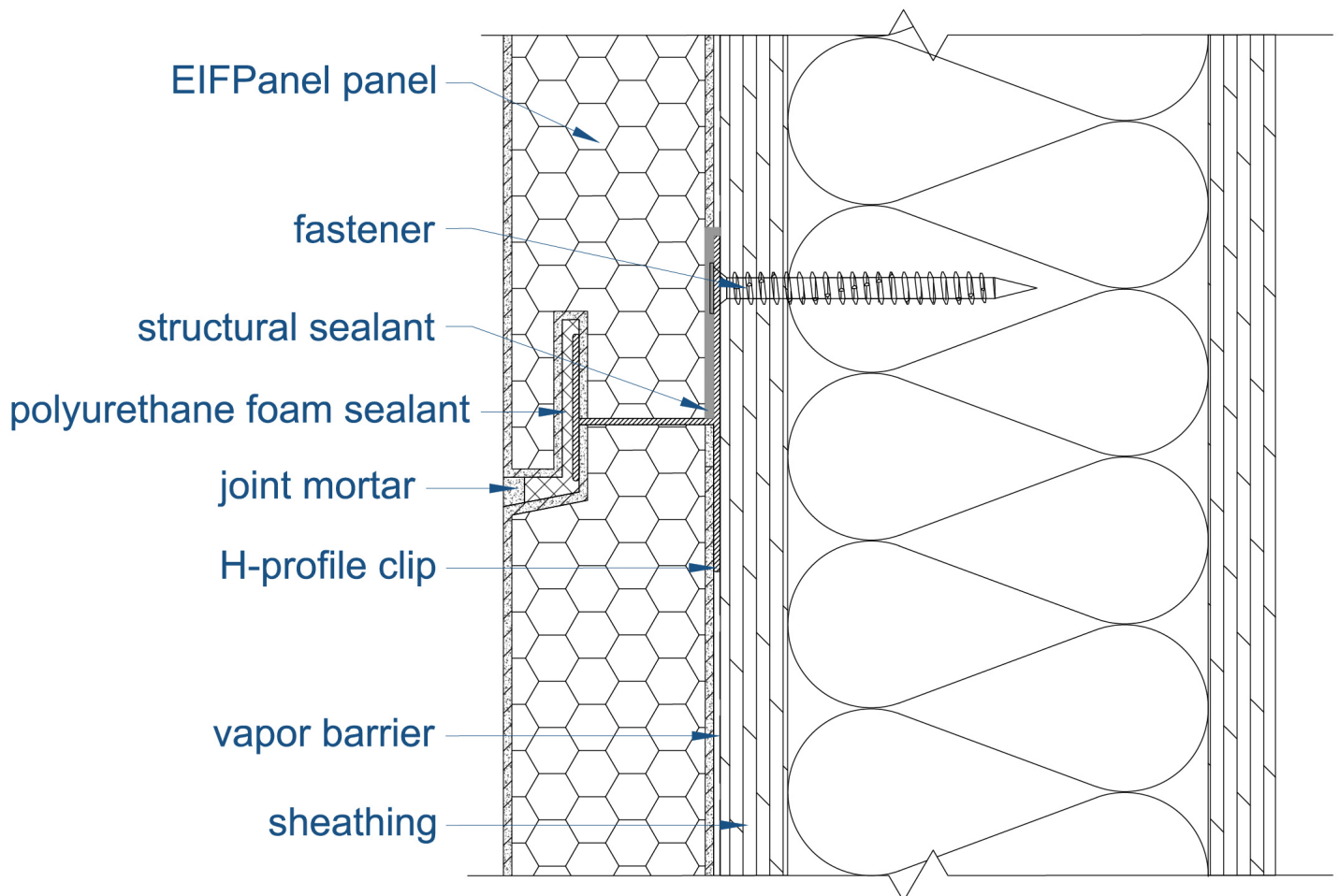


Figure 4: Outer Corner Detail

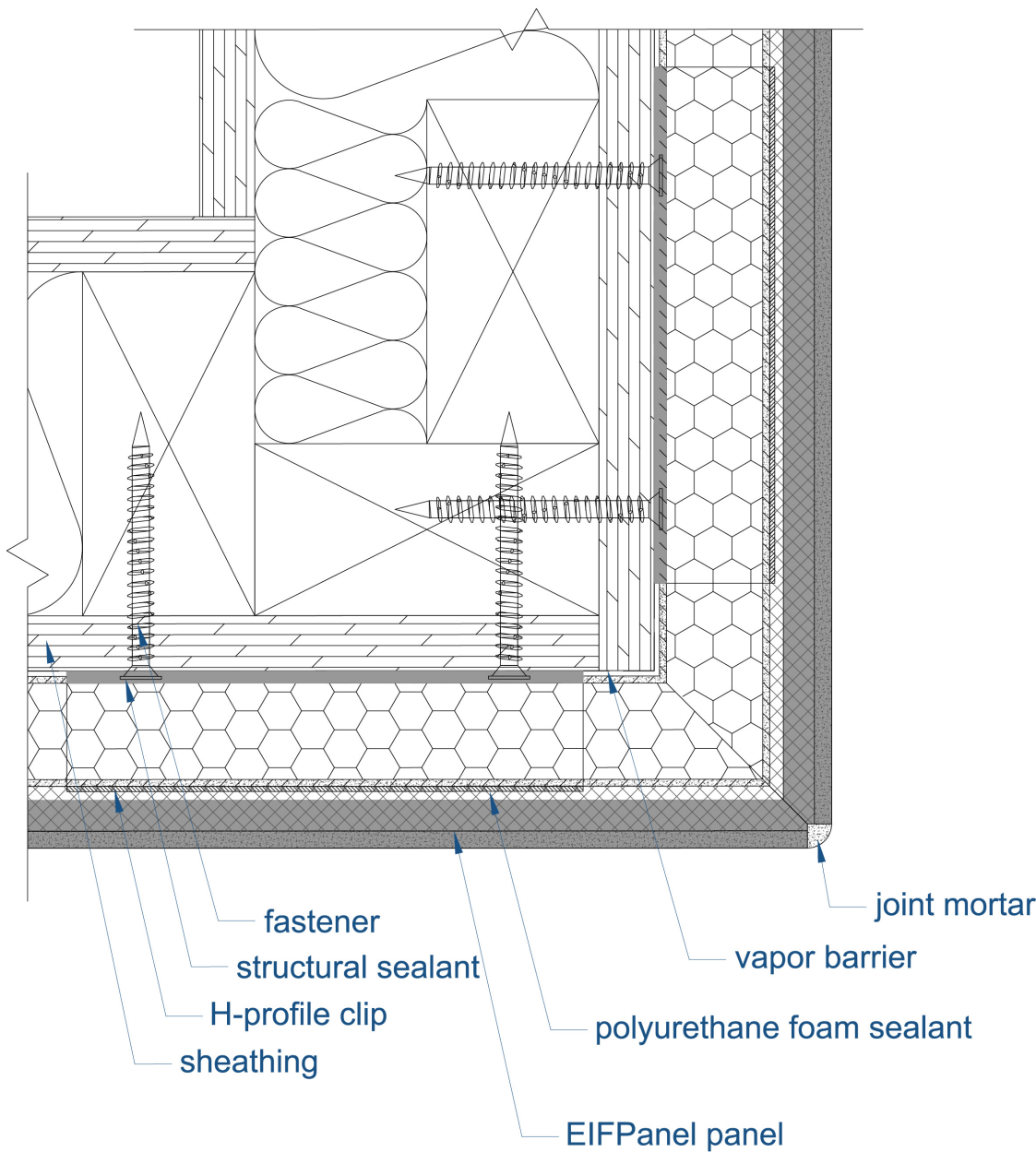


Figure 5: Inner Corner Detail

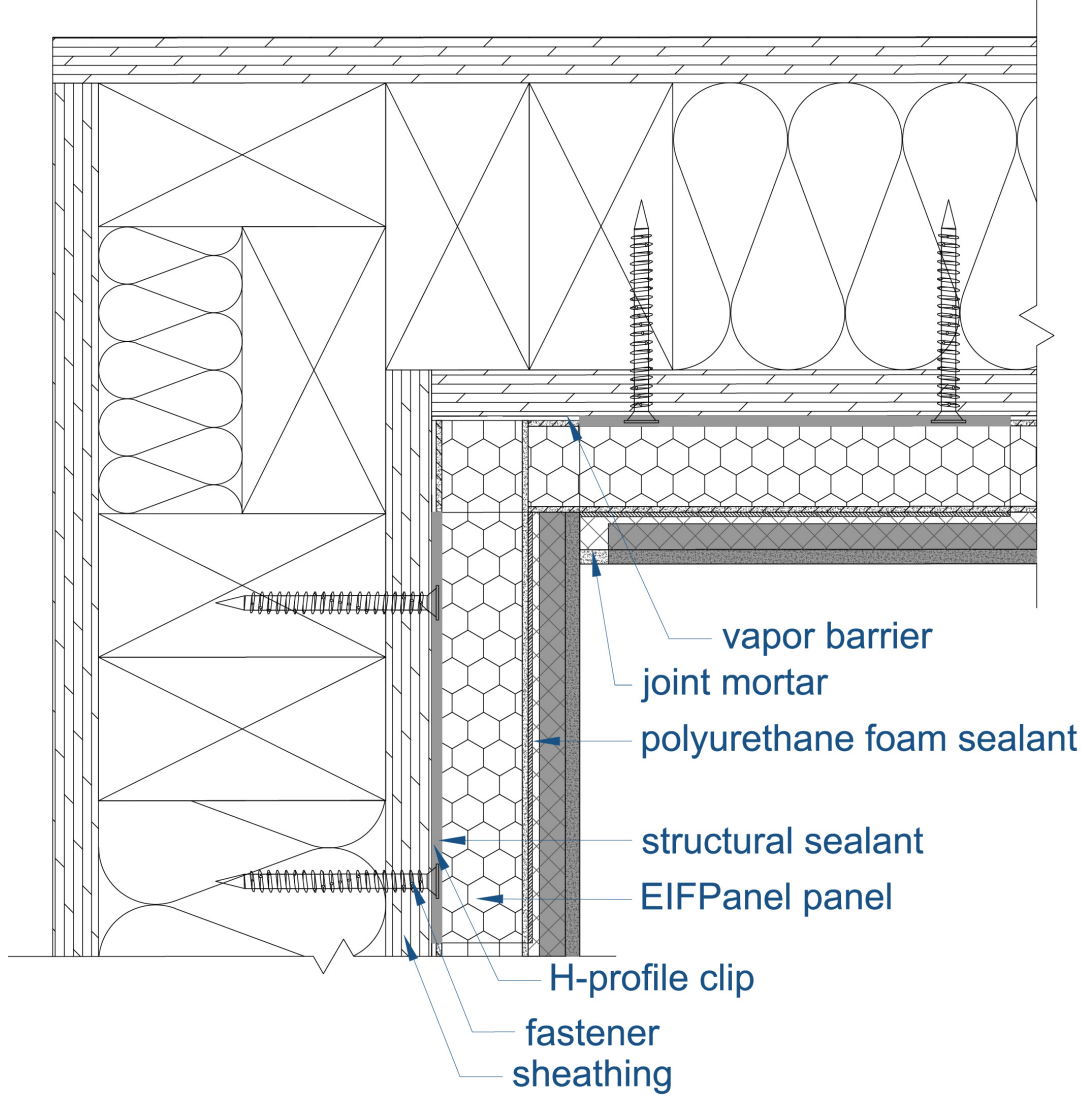


Figure 6: Window Jamb Detail (Option 1)

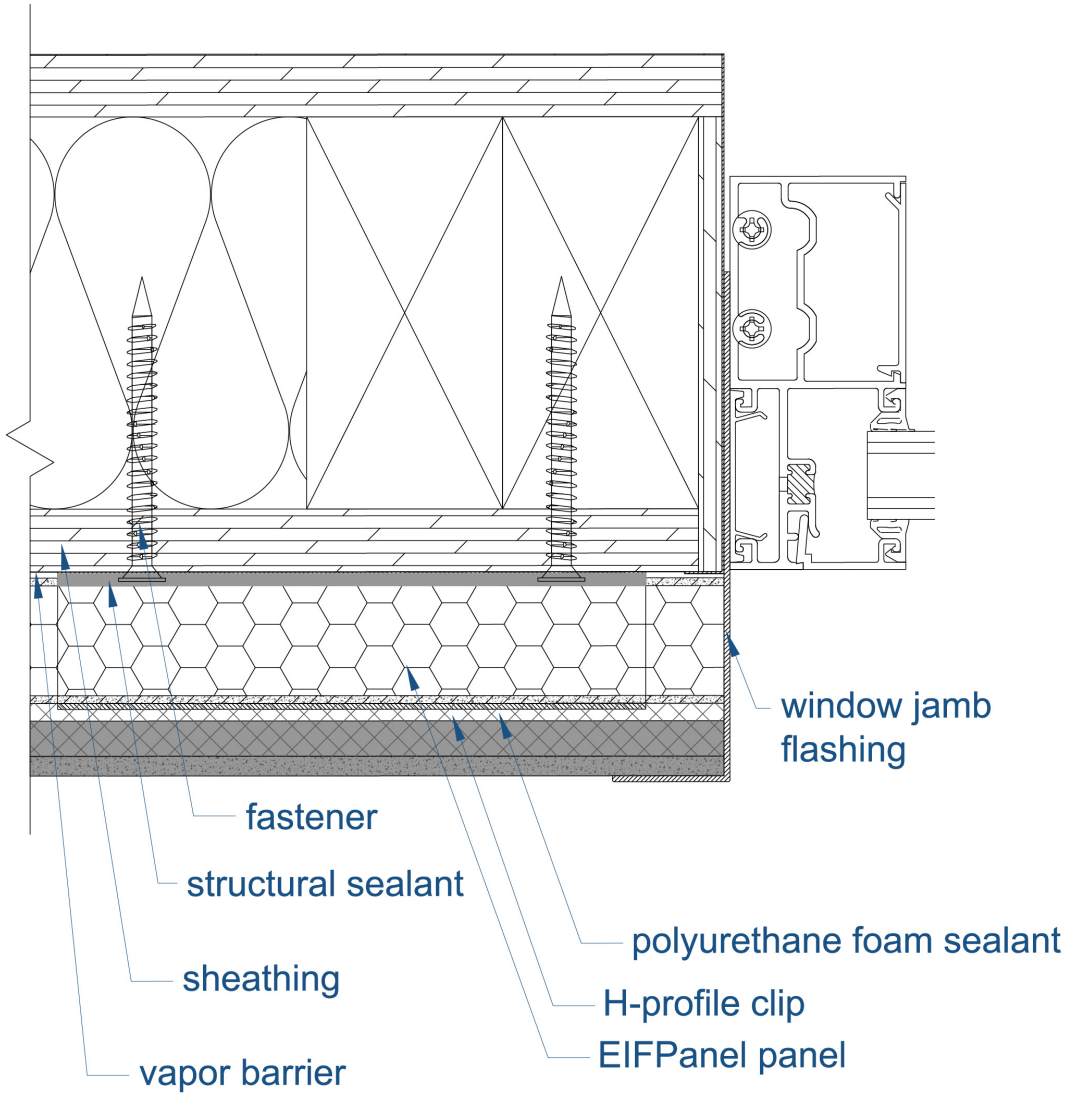


Figure 7: Window Jamb Detail (Option 2)

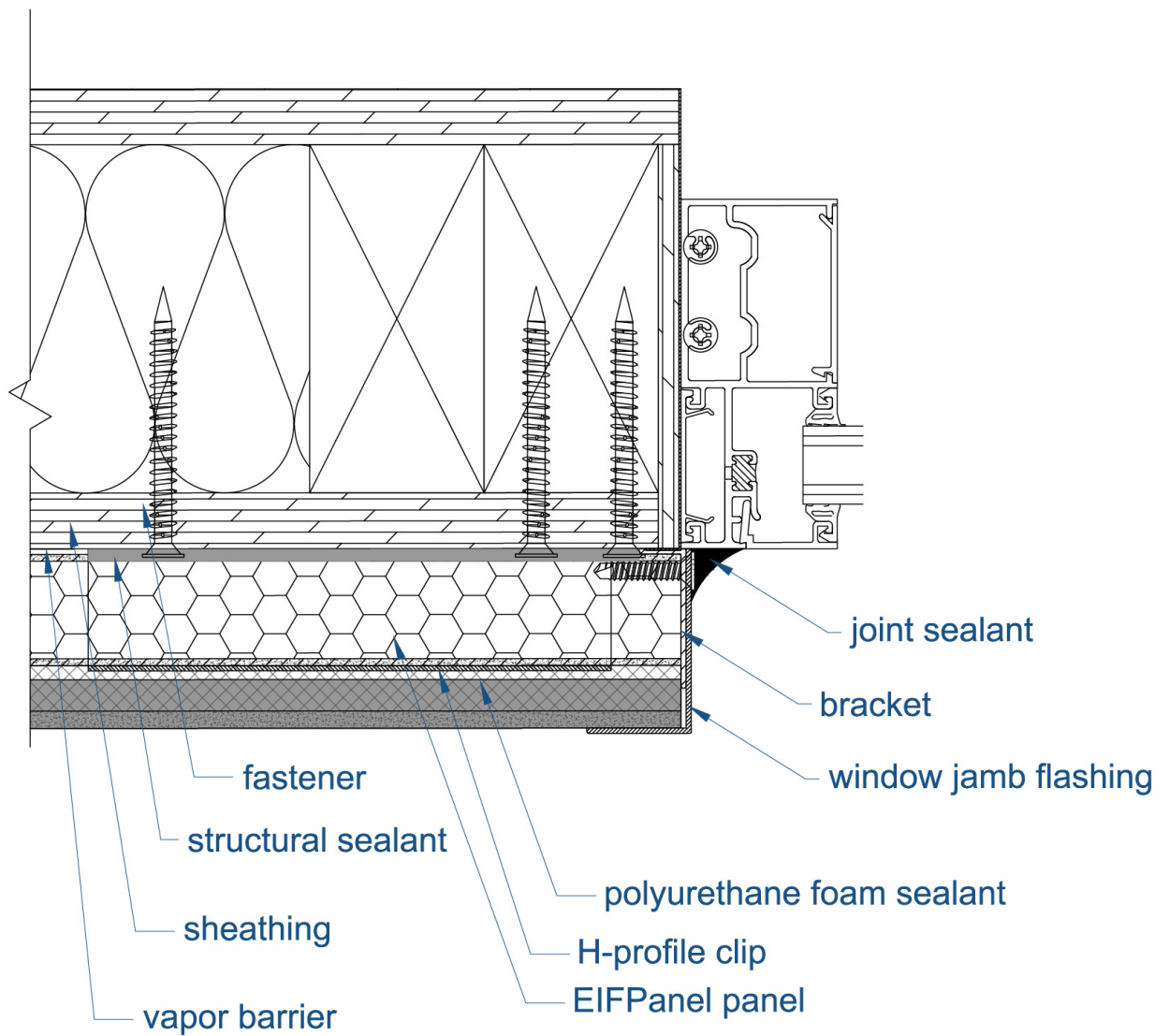


Figure 8: Window Head Detail (Option 1)

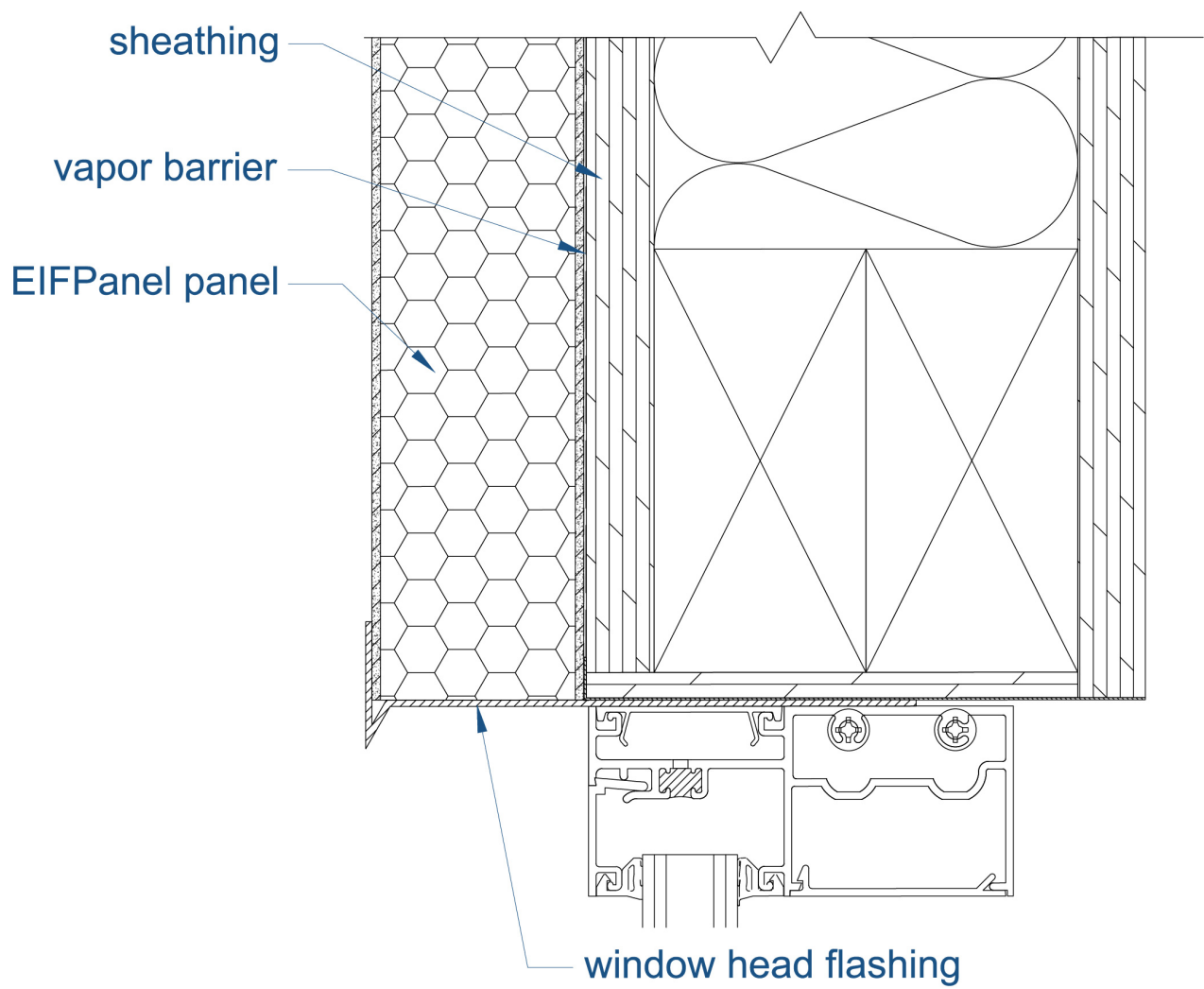


Figure 9: Window Head Detail (Option 2)

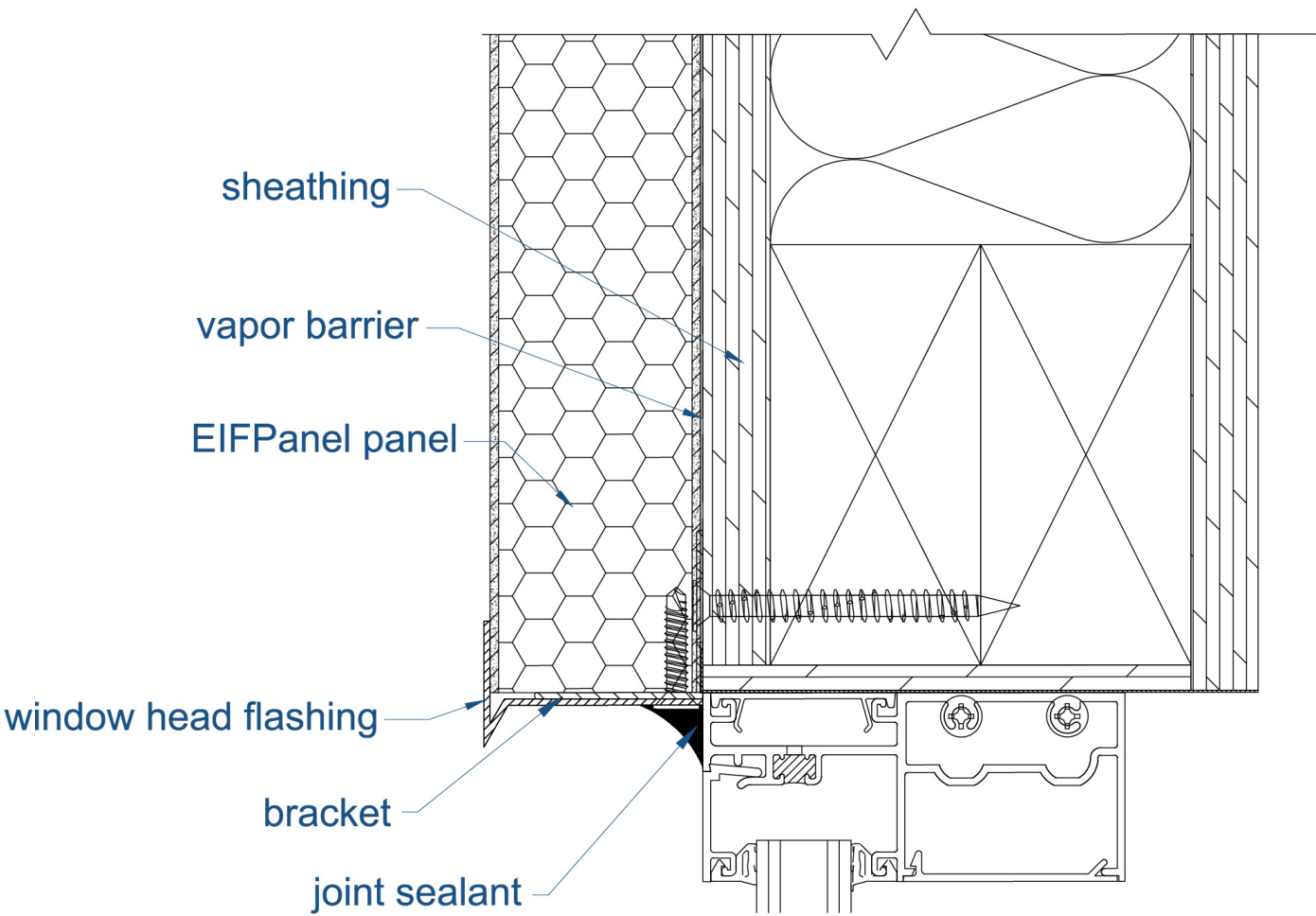


Figure 10: Window Sill Detail (Option 1)

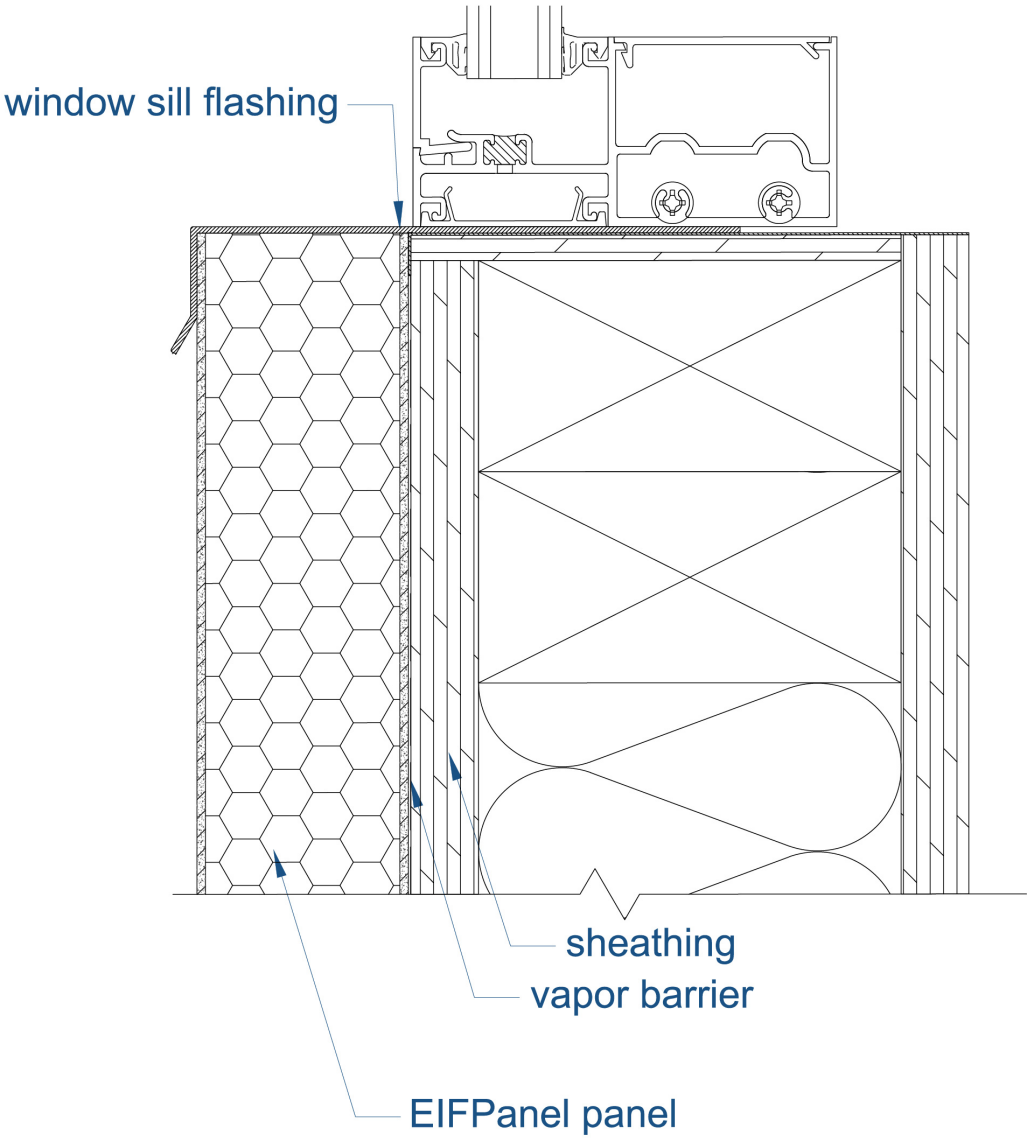


Figure 11: Window Sill Detail (Option 2)

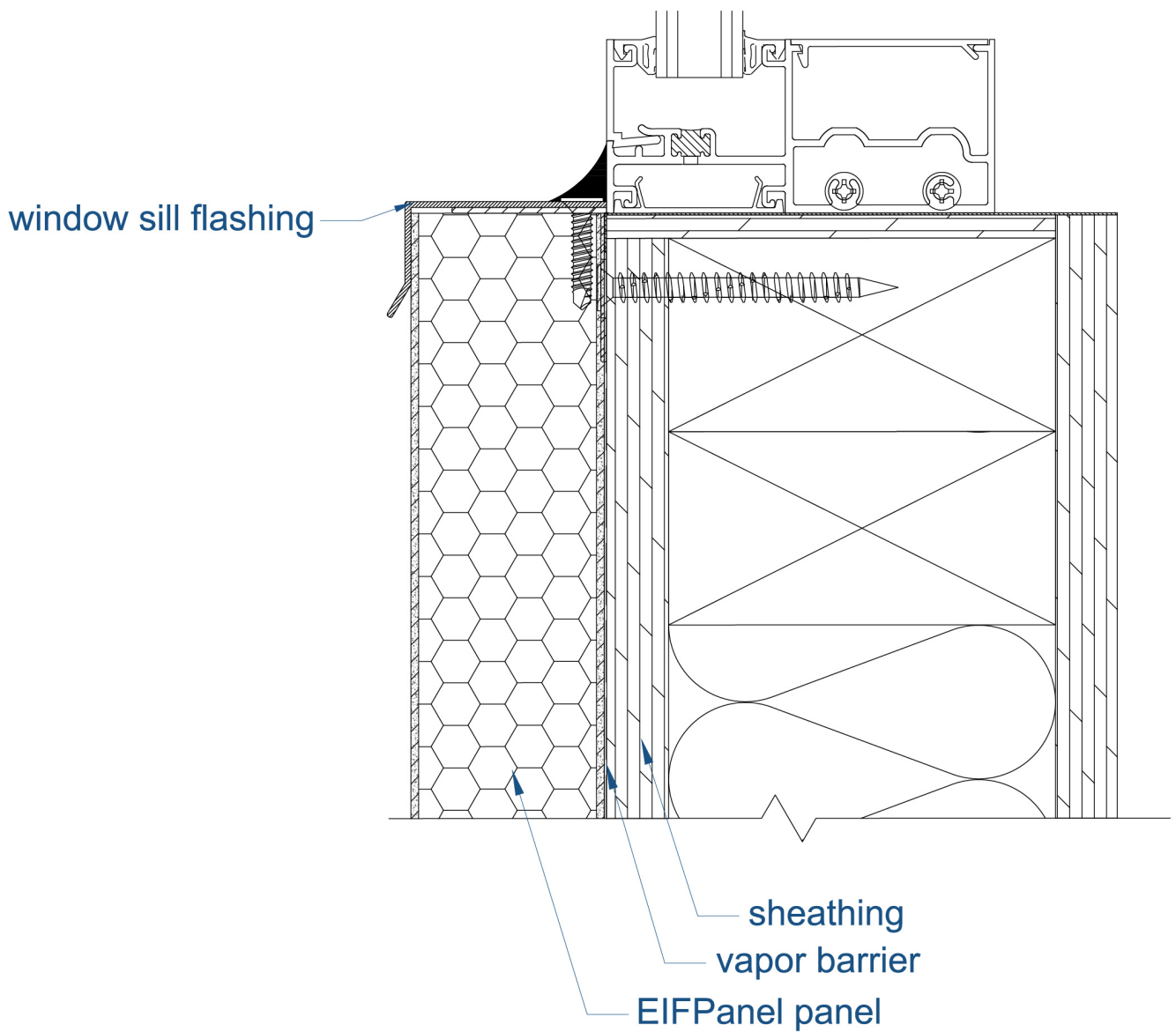


Figure 12: Parapet Detail

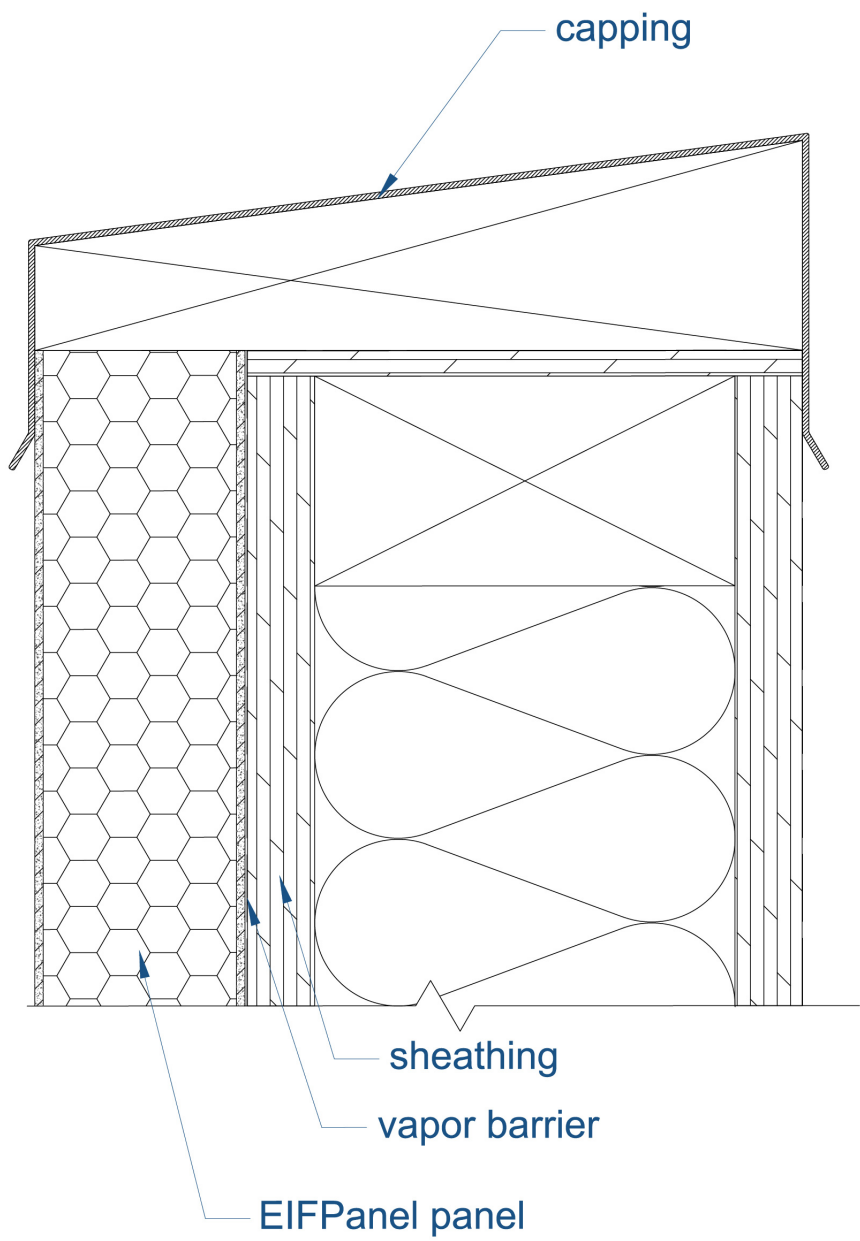
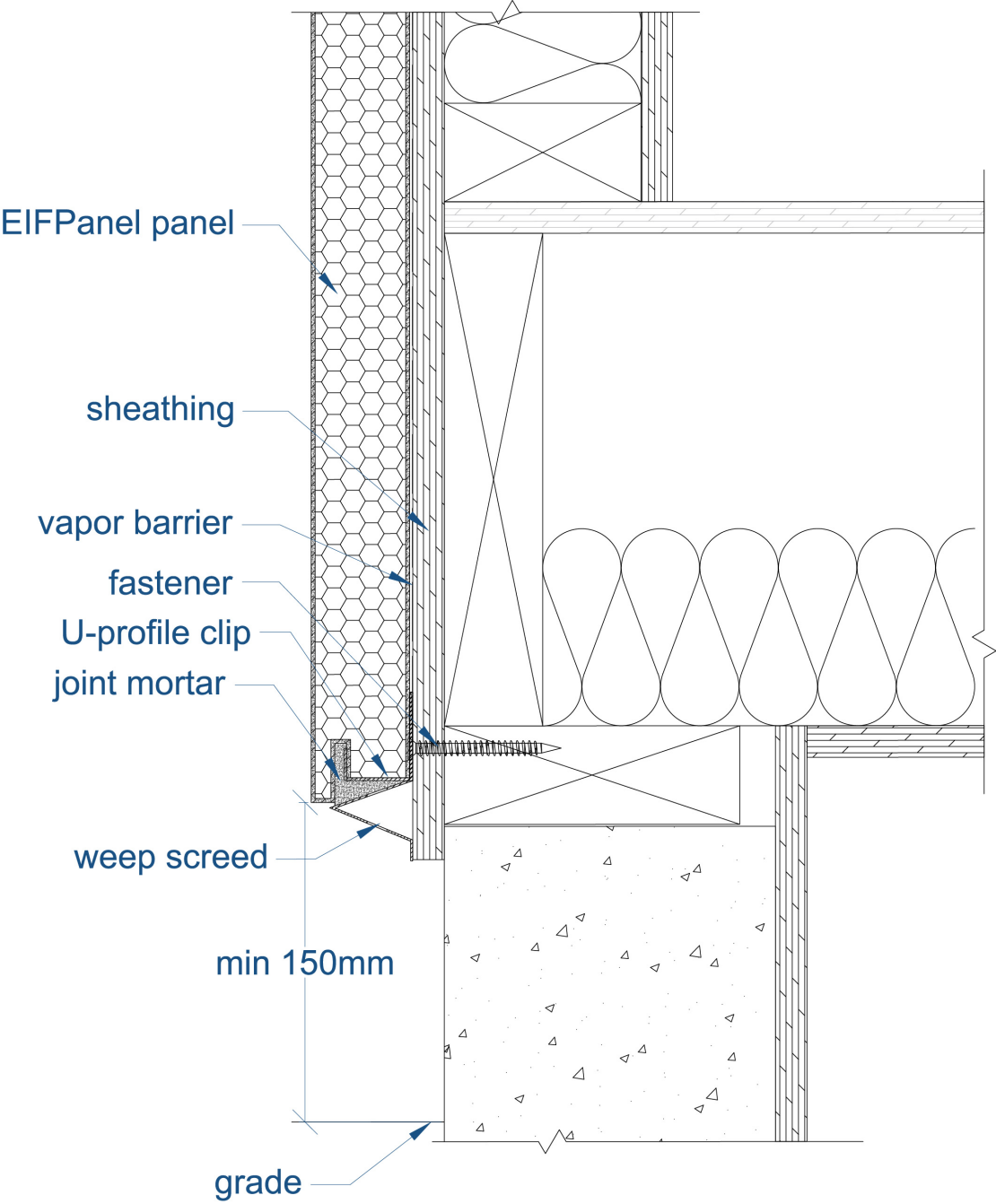


Figure 13: Base Detail



Remarks

Cleaning

There are two methods of cleaning panel, mechanical cleaning and chemical cleaning. In principle, perform the cleaning of the panel over the entire surface, because partial cleaning can result in color and tonal imbalance. Normal stains can be removed with a sponge and water. Warning High Pressure Cleaning is a rough treatment of panel. Use of a high-pressure cleaner may damage the surface. Therefore, high pressure cleaning is not recommended.

Impact by Pollution and Nature

Weather and nearby vegetation may affect the appearance of the panels. Take caution to avoid pollution, dust and leaves from trees, bushes and flowers to not impact the integrity of the panels. Excessive humidity, salts, or other chemical agents can corrode the panel and attack metal.

Special Information

THE INFORMATION OR DATA IN THIS SHEET SERVES TO ENSURE THE PRODUCT'S INTENDED PURPOSE OR ITS SUITABILITY FOR USE AND IS BASED ON OUR FINDINGS AND EXPERIENCE. NEVERTHELESS, USERS ARE RESPONSIBLE FOR ESTABLISHING THE SUITABILITY OF THE PRODUCT FOR ITS INTENDED USE. APPLICATIONS OTHER THAN THOSE EXPLICITLY MENTIONED IN THIS TECHNICAL DATA SHEET ARE ONLY PERMISSIBLE AFTER PRIOR CONSULTATION WITH WALPANEL, INC. WHERE NO APPROVAL IS GIVEN, SUCH APPLICATIONS ARE AT THE RISK OF THE USER. THIS APPLIES IN PARTICULAR WHEN THE PRODUCT IS USED IN COMBINATION WITH OTHER PRODUCTS. WHEN A NEW TECHNICAL DATA SHEET IS PUBLISHED, ALL PREVIOUS TECHNICAL DATA SHEETS ARE NO LONGER VALID. THE LATEST VERSION IS AVAILABLE ON THE INTERNET AT WWW.WALLSHELL.COM.

Wallshell EIFPanel™

ARCHITECTURAL DETAIL

February 9, 2021



Walpanel Inc.
888-998-4611
www.wallshell.com